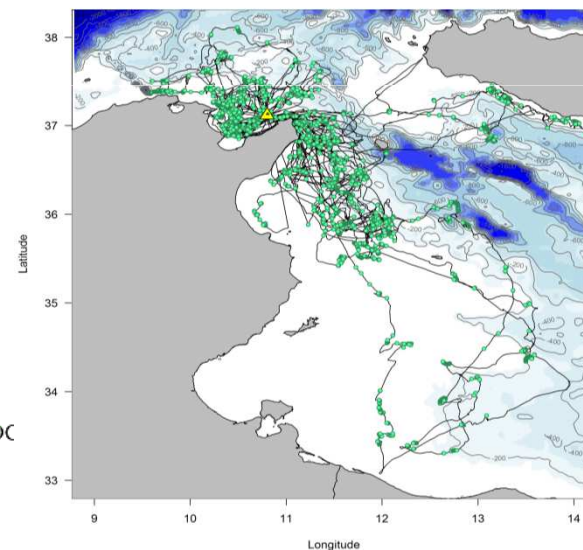


# Scopoli's Shearwater tracking, Zembra



## ECOLOGY AND SPATIAL DISTRIBUTION OF SCOPOLI'S SHEARWATER NESTING IN ZEMBRA, TUNISIA



COREGE 2013

APAL - Initiative PIM - CEFE-CNRS (Clara Péron)  
Agents on the field: J.B Pons and Ridha Ouni



# METHOD

2 missions in 2012 and 2013

- GPS Devices (20g, recording bird position every 3min)
- TDR Devices (Temperature and Depth Recorder, 2,7 g)

Année	Masse Pose [min-max]	Masse Récup [min-max]	Nb GPS déployés	Nb GPS récupérés	Nb voyages	Nb TDR déployés	Nb TDR récupérés
2012	634.5 [445-765]	639.5 [485-770]	23	19	35	11	10
2013	601.6 [480-740]	624.1 [480-800]	37	31	65*	13	12

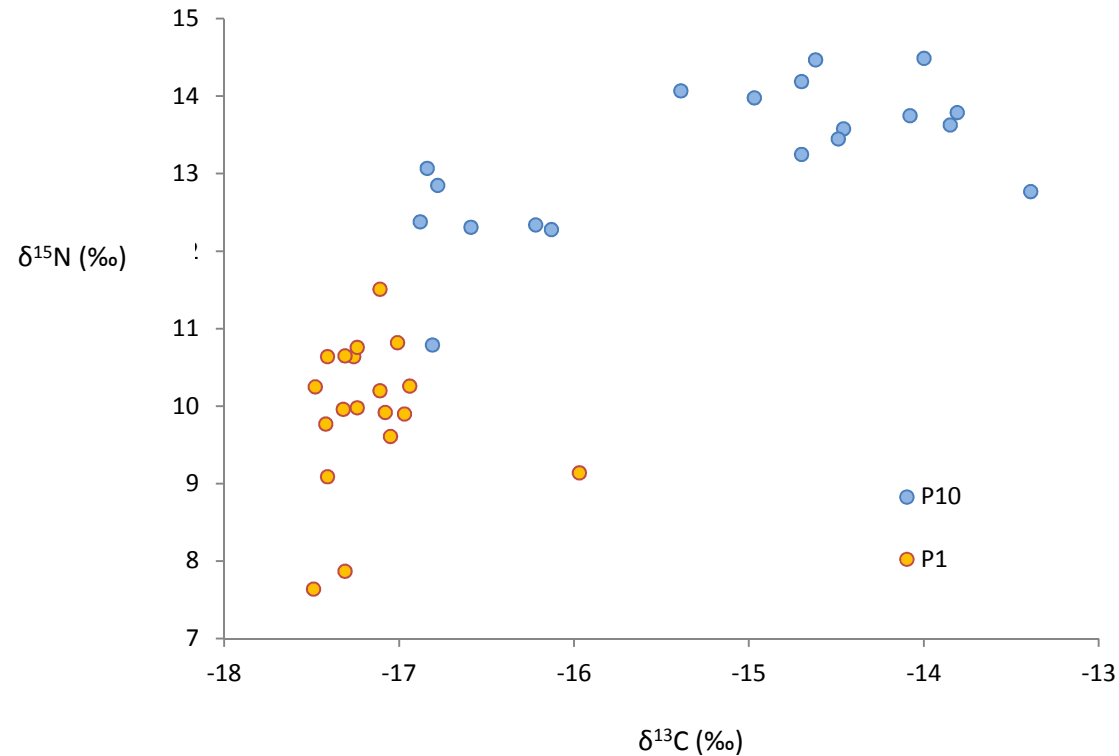
- Isotopic analysis on feather samples collected in 2012 (P1 and P10)



COREGE 2013

Figure 13 : signatures isotopiques des primaires P1 et P10 (n=19 individus) collectées en août 2012.

# STUDY OUTCOMES - Isotopic Analysis



Isotopic analysis P1 and P10 (n=19 individuals) 2012.

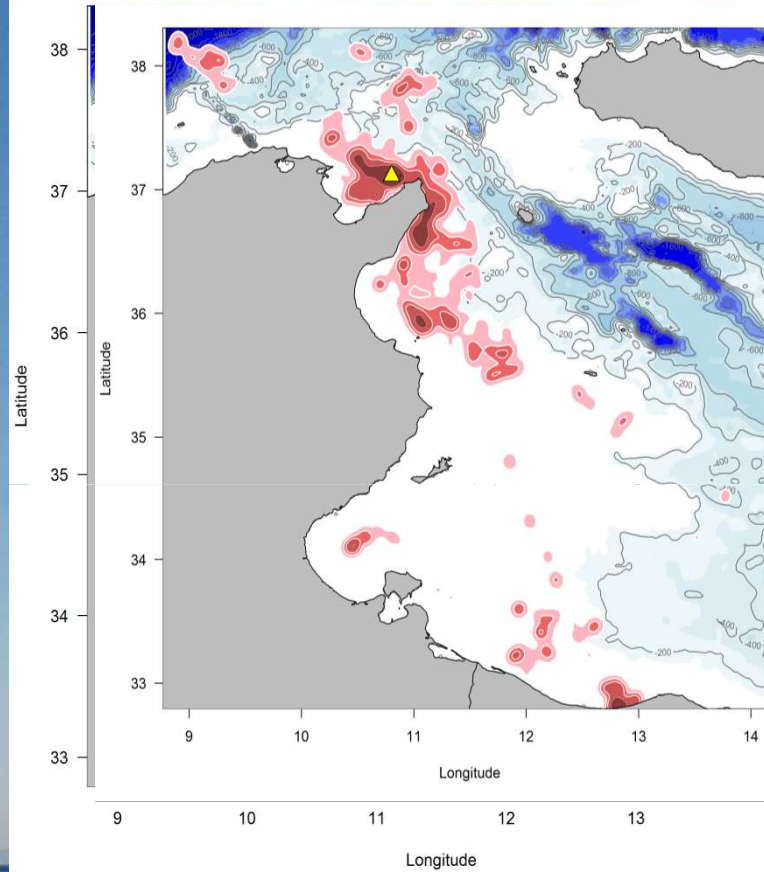
DIET => Strong inter-individual variability



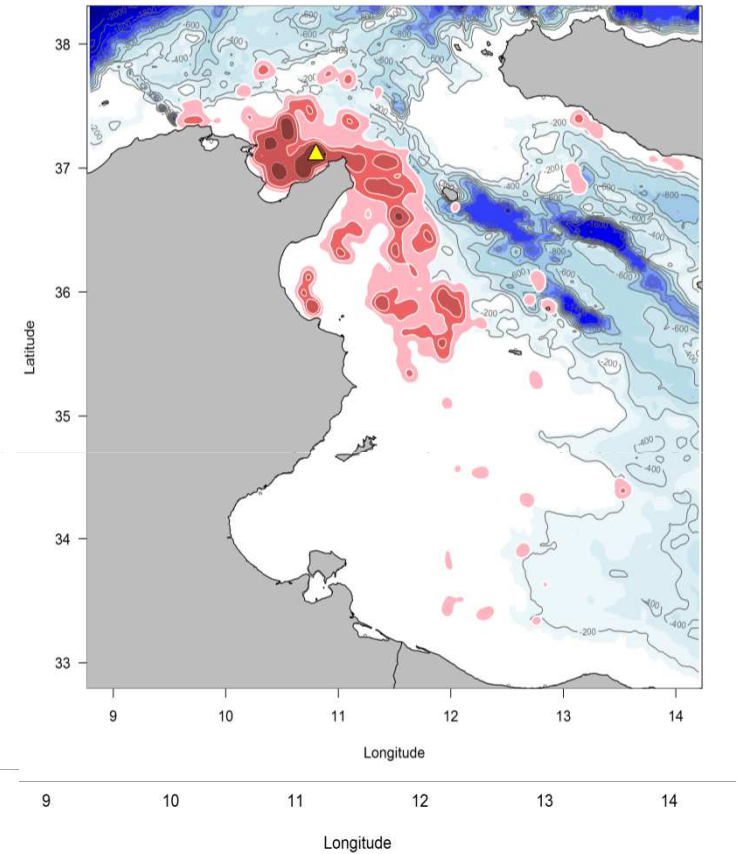
COREGE 2013

# STUDY OUTCOMES - GPS Analysis

2012



2013



Foraging travel on  
average: 2 days



COREGE 2013